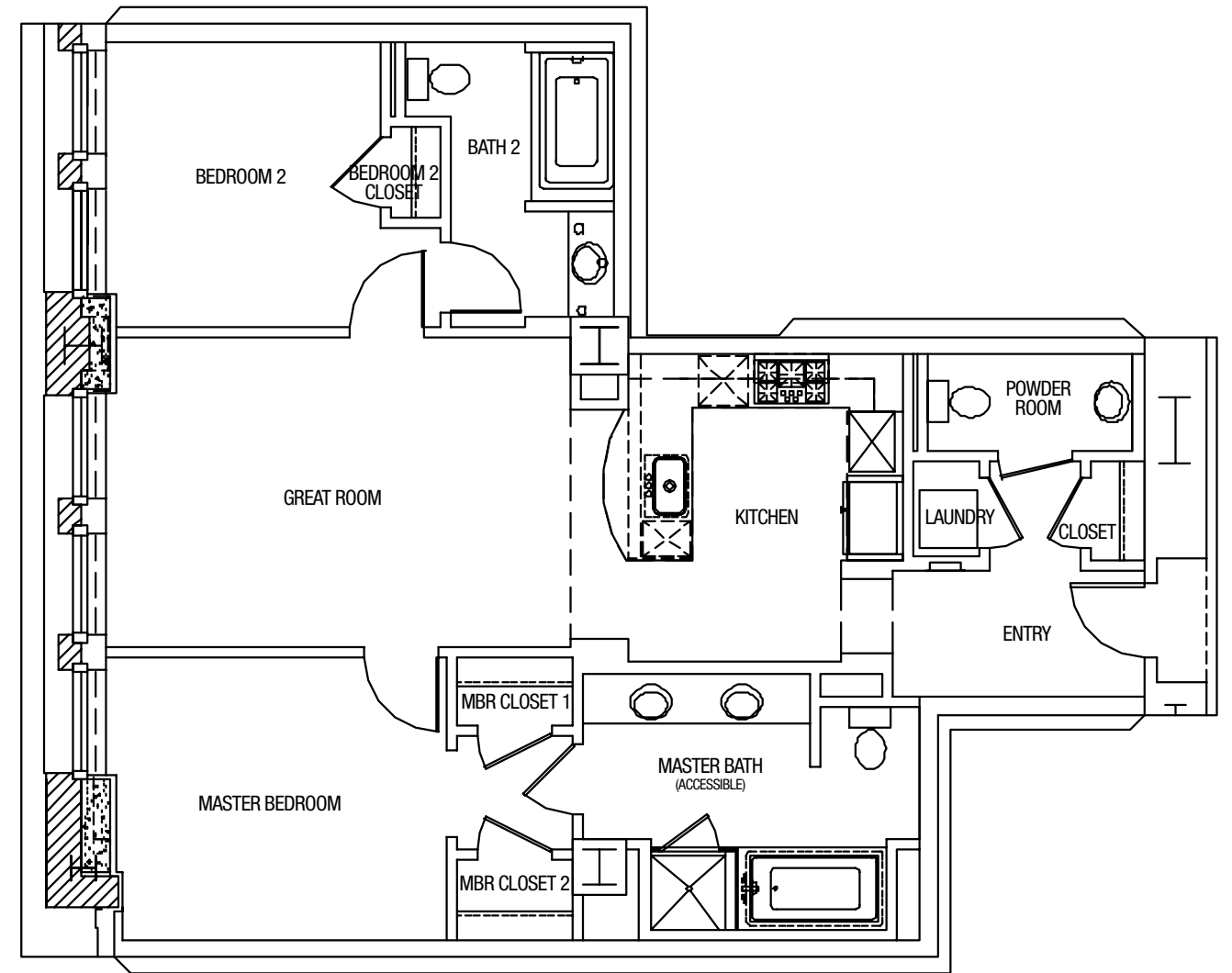


- Ability to customize your interiors
- Acoustically rated exterior windows
- Marble bathrooms
- Washer and dryer hookups
- High-speed Internet access
- 9' 6" ceilings with crown moldings

Floor Plate, Residences 1402, 1502,  
1602 and 1702

Developer's conceptual rendering.  
Features and amenities are proposed and subject to change.



Sample Residence  
Two-Bedroom, Two-Bath  
1,275 Square Feet

Floorplan

Square-footage calculations of the Residences may change during the course of construction, and may be determined in a variety of methods. For example, architects often measure square footage from the outer face of glass of exterior walls, the inside of corridor walls and from centerline to centerline between the remaining demising walls, which is the measurement calculation used here. Another method measures square footage from the finished surface to finished surface of the demising walls (air conditioned space).